

Renter's 2025 Handbook

Lake Almanor Country Club



Amenities List
Phone Numbers
Important Information
Renters Fees & Fines
LACC Map & Lake Almanor Map

Renter's Welcome Handbook

Table of Contents

.....	1
Renter's Welcome Handbook	3
Welcome & Community Essentials	5
Emergency Contacts	5
Maps	6
Club Amenities & Activities	7
Golf & Pro Shop	7
Sugar Pine Lounge	8
Clifford's on the Green - Restaurant	8
Sports Center & Recreation	9
Summer Music Program	9
Recreation Areas	10
Beaches	11
Rules, Fines & Safety	12
General Reminders	12
Wildlife Safety	12
Pets & Service Animals	12
Noise Regulations	12
Camping & RVs	13

Boating & Watercraft	13
Golf Carts, OHVs, Dirt Bikes, & ATVs	13
Trash & Refuse Disposal.....	13
Fees & Fines	14
Fees & Fines - Continued	15
Services & Support	16
Security & Enforcement	16

Welcome & Community Essentials

Welcome guests of Lake Almanor Country Club. We are pleased that you have chosen to spend your vacation time with us. Please take advantage of the wonderful amenities we have to offer. This is a community of private homes, roads, and facilities, not a commercial resort. We ask you to join us in protecting the beauty and serenity of this community.

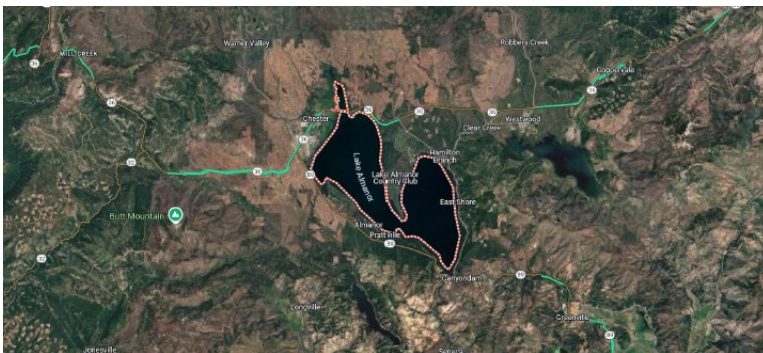
We hope you have a great vacation and that you enjoy your stay!

From the LACC Staff and Community

Emergency Contacts

Service	Phone	Address
Emergency	911	
Seneca Hospital	(530) 258-2151	130 Brentwood Dr, Chester, CA 96020
Peninsula Fire Dept.	(530) 259-2306	801 Golf Club Road, Lake Almanor, CA 96137
LACC Security	(530) 259-5320	601 Clifford Dr, Lake Almanor, CA 96137

Maps



Club Amenities & Activities

Venue	Type	Phone
LACC Golf Shop	Pro Shop	(530) 259-2868
Sugar Pine Lounge	Lounge	(530) 259-5440
Sports Center	Recreation	(530) 259-3656
Clifford's on the Green	Restaurant	(530) 259-2026

Golf & Pro Shop

Carved through fragrant pine forests and perched along the lake's edge, the Lake Almanor Country Club Golf Course offers 9 or 18 holes of pure mountain-lake golf. Each hole frames dramatic views of towering evergreens and shimmering water, while carefully contoured greens and strategically placed bunkers reward thoughtful shotmaking.

- **Course Specs:**
 - Men – Par 71 | 5,987 yards
 - Women – Par 72 | 5,433 yards
- **Practice Facilities:** Full driving range, putting green, and chipping area to warm up before your round.
- **Rentals & Amenities:** Carts and premium clubs available for rent.
- **Book Your Tee Time:** Reservations, rate details, and the full season's schedule are online at lakealmanorcountryclub.com/golf.

Whether you're chasing a personal best or simply savoring the scenery, our course delivers an unforgettable alpine-style golf experience.

Sugar Pine Lounge

Perched along the edge of our private golf course, the Sugar Pine Lounge is the ultimate retreat for LACC members, renters, and guests. Floor-to-ceiling windows frame sweeping fairway vistas, while cozy seating and warm ambient lighting set the stage for laid-back luxury. Sip craft cocktails, local brews, or a glass of wine as you unwind after a round of golf, catch up with friends, or simply watch a mountain sunset. With its blend of cozy elegance and unrivaled scenery, the Sugar Pine Lounge turns every visit into a memorable escape.

Clifford's on the Green - Restaurant

Perched beside the 9th/18th hole, Clifford's on the Green serves up classic American favorites in a relaxed, clubhouse-casual setting. Think Club Sandwiches, Pulled Pork Sandwiches, delicious appetizers, and fresh salads. Each made with quality ingredients and just the right amount of flair. Wide windows look out over the fairway, letting in plenty of daylight and that signature mountain-lake breeze. Whether you're refueling after nine holes, grabbing a quick lunch between rounds, or sharing fries and a drink with the family, Clifford's delivers comforting, unpretentious fare and warm service every time. Pull up a chair, order your favorite, and settle in for good food and golf-course views.

Sports Center & Recreation

The Sports Center at Lake Almanor Country Club is your all-in-one destination for fun, fitness, and family time.

Whether you're perfecting your serve on our tennis and pickleball courts, brushing up on your skills with private lessons, shooting hoops on the basketball court, or playing a competitive game of football with friends, you'll find something to spark your athletic spirit. Little ones can explore the playground or try their hand at horseshoes, while disc-golf aficionados and badminton fans can tee off on our scenic courses. When it's time to cool down, head to the swimming area or take advantage of lakeside access for a paddle, then gather around the bonfire at dusk to swap stories under the stars. With equipment rentals, snack-shack treats, the Sports Center keeps everyone—from serious athletes to casual weekend warriors—moving, smiling, and making memories.

- Tennis Courts
- Pickleball Courts
- Swimming
- Horseshoe Pits
- Bocce Ball
- Basketball Courts
- Volleyball
- Disc Golf
- Badminton
- Corn Hole
- Shuffleboard
- Croquet

Summer Music Program

Each summer, the Lake Almanor Community Foundation brings live music to life at the Rec Area 1 Bandshell, nestled beneath towering pines and overlooking the sparkle of the lake. Enjoy an eclectic lineup—from

bluegrass pickers to acoustic singer-songwriters and everything in between—under starry skies and mountain breezes. Our BBQ pits run on a first-come, first-served basis—no bookings needed. Just mind the time limits posted so there's enough sizzle to go around! For performance dates, theme nights, and pit-reservation details, check our online Calendar of Events (lakealmanorcountryclub.com) and plan your perfect lakeside concert evening.

Recreation Areas

Our three Recreation Areas are designed for families and friends to gather, play, and relax in comfort. Find everything from clean restroom facilities, modern play structures for little ones, and spacious lawns perfect for picnics or a casual game of catch. Shaded benches and picnic tables provide the ideal spot for parents to unwind while keeping an eye on the action, and occasional pop-up activities—like arts & crafts or lawn games—add extra fun (check our Calendar of Events on our website lakealmanorcountryclub.com for details). For everyone's safety and enjoyment, young children must remain under parental supervision, and the Recreation Areas close promptly at 10:00 PM to preserve the peaceful evening ambiance.

Beaches

Sink your toes into soft sand at our two designated beach areas (Rec 1 & Rec 2). Each beach features:

- **Clearly marked swim zones** with roped buoys—please swim at your own risk as there are no lifeguards.
- **Adjacent restrooms and shaded picnic spots**, so you can refuel without trekking back to your car.
- **Safe swimming rules**: no swimming in the boat basin and always follow instructions.
- **No pets, glass containers, or open fires** on the beach.
- **Observe posted hours** and closures

Check our online Calendar of Events for sand-castle contests, beach yoga mornings, and special family swim nights. Whether you're cooling off after a round of golf or building epic sand forts with the kids, our beaches offer the perfect blend of relaxation and safe lake fun.

Rules, Fines & Safety

General Reminders

- This is private property—do not trespass on adjacent homes or docks.
- Personal fireworks are illegal in Plumas County; enjoy the annual 4th of July display at the peninsula tip.
- Do not feed deer or any wildlife.
- Parents are responsible for supervising children at all times.

Wildlife Safety

Bears and mountain lions inhabit the area. Bears displaced by wildfires may be attracted to garbage—store refuse in secure, animal-resistant containers. Report sightings of mountain lions and bears to authorities and exercise caution outdoors.

Pets & Service Animals

Renters and guests are prohibited from bringing dogs onto LACC or rental properties, except for certified service animals (proof required).

Noise Regulations

Quiet Time. Objectionable noise after 10 PM–12 AM on select holidays—any constant noise audible indoors on adjacent properties is prohibited. This includes loud music, gatherings, barking dogs, and racing engines.

Camping & RVs

No camping of any kind is allowed within LACC. RVs, tents, and portable sleeping facilities are prohibited unless parked on private property. To keep things spacious and neighbor-friendly, we allow a maximum of two RVs per property—and one pop-up tent (up to four people).

Boating & Watercraft

Register all watercraft and obtain a launching sticker (\$125 for 1–7 days) at Clifford Gate. Obey the 5-mph speed limit within 200 ft of shore and boat basins. Trailer parking in launch areas is prohibited.

Dock time limits: Rec Area 1 – 1 hr; Rec Area 2 – 30 min.

Golf Carts, OHVs, Dirt Bikes, & ATVs

Renters or their guests are prohibited from bringing any OHVs, Golf Carts, Dirt Bikes, or Snowmobiles onto LACC and adjacent properties, and renters may not use the owner's golf carts, either.

Trash & Refuse Disposal

LACC does not provide public trash service. If your rental includes trash, pickup is on Mondays. Otherwise, use the Chester Transfer Station at 3 Chester Dump Road (Hwy 36 & A-13). Tags for additional cans (30-gal max) are sold at Clifford Gate security and the Admin Office.

Fees & Fines

Code	Violation	Fine
2.3.10	Falsely registering renters as guests	1st - \$1000 +DIF 2nd - \$2000 +DIF 3rd - \$3000 +DIF
3.1.2	Vandalism, malicious mischief, or intentional misuse of any LACC facilities or equipment.	\$500 PP
3.2.3	Overnight parking	\$75 +Tow
3.2.5.21	OHV's operated by renters	\$500
3.3	All Boat, Dock, Buoy, and Ramp	\$200
3.4.2.4	Glass containers on beach	\$50
3.6	Violation of tennis court rules	\$50
3.7	Violation of golf course rules	\$250
4.1.2 A	Unauthorized Dogs (ADA except)	1st - \$150 PO 2nd - \$250 PO 3rd - \$350 PO 4th - \$750 PO
4.3.3	Failure to Provide for Renters	\$60
4.6	Objectionable noise after 10 PM, 12 AM on Select Holidays	1st - \$250 PO 2nd - \$350 PO 3rd - \$500 PO
4.7 A	Camping/RVs on Common	\$180
4.7 B	Boats, OHV, or Trailers stored on vacant lot(s)	1st - \$250 PO/PV +T 2nd - \$500 PO/PV +T 3rd - \$750 PO/PV +T
5.1.1	Open Burning	1st - \$600 M +FC 2nd - \$1200 M +FC 3rd - \$2400 M +FC
5.5	Use of Fireworks	\$500 M +FC +SHF
7.1.2	Interference with Security Patrol	1st - \$500 M +SHF 2nd - \$1000 +SHF 3rd - \$1500 +SHF 4th - \$2500 +SHF
22350	Basic speed limit violations	\$125-\$350

Fees & Fines - Continued

PDog – Per Dog

PO – Per Offense

PV – Per Vehicle

SHF – Sheriff

FC – Fire Chief

DIF – Daily Impact Fee

M – Mandatory

T - Tow

For a complete list of Fees & Fines, visit
lakealmanorcountryclub.com/lacc-governing-documents/
and click on LACC Fees & Fines Schedule.

Services & Support

Security & Enforcement

Citations may be issued for rule violations. Offenders must appear before the LACC Board of Control or pay fines.

Unresolved citations will result in charges to the owners.

Contact Security at (530) 259-5320 or visit Clifford Gate security for full fine details.